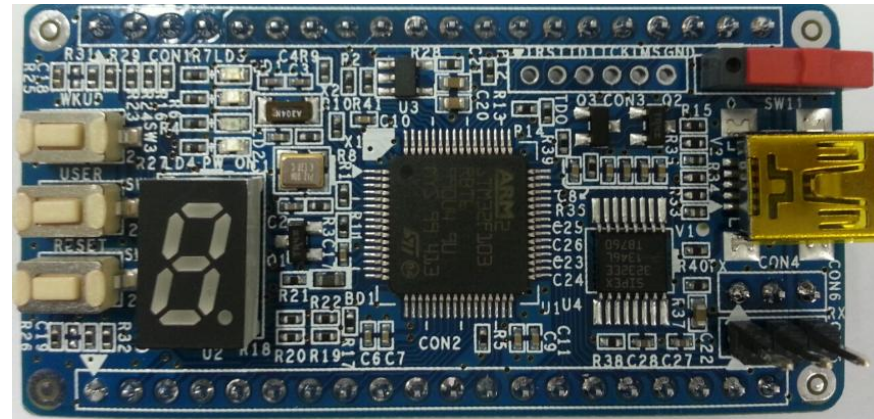


Quick Start Guide

CRZ.

CRZ. TECHNOLOGY



Mango-M32

About the Mango – M32

- STM32F103xx MCU: Cortex-M3기반 ST Microelectronics사의 **Micro-Controller 64Kbytes or 128Kbytes Flash Option**
- 2-Port PS-232C Interface
- 1 Port USB 2.0 FS Device Interface
- 3 indicator LEDs
- 1 Power LED
- 2 USER Keys : WKUP, USER
- 1 Reset Key
- 1 Boot Select Switch : System Memory and Main Flash Boot
- 2x20Pin HEADER for Expansion
- **Option : 32.768KHz. 12MHz Crystal Oscillator**

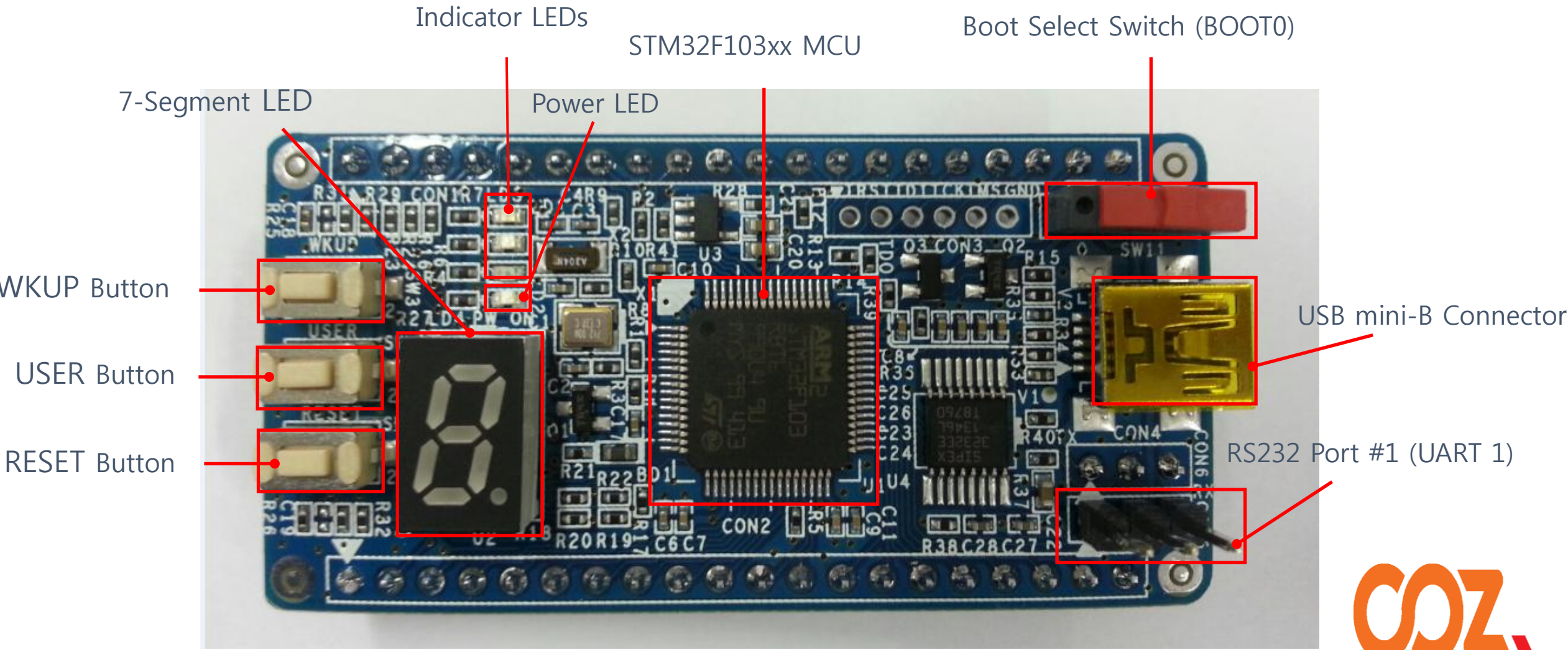


Getting Started

- ❖ Boards : Mango-M32 Board, CM usb to RS232 module
- ❖ Cables : mini-usb Cable 2ea, 3pin serial cable,
- ❖ Power Supply : USB 5V
- ❖ Documentation : Quick Start Guide (this document)



Get to Know the ATDBG1

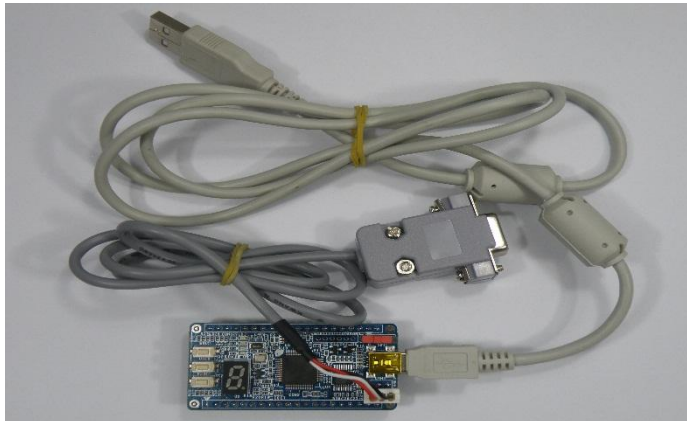


Setting up the Board

- 1 Mango-M32보드에 3pin serial cable 연결

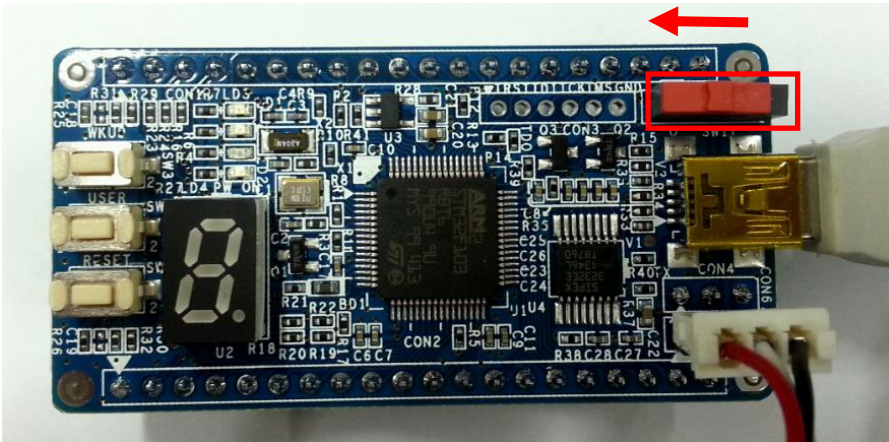


- 2 Mango-M32보드에 mini-usb 연결



Setting up the Board

3 Boot Select Switch 설정.



4 Power 연결

5V/2A 어댑터를 Mango-M32 보드에 연결합니다. 전원이 정상적으로 연결되면 Power LED가 켜집니다.



Setting up the Board

5

디버깅 메시지 확인

터미널 프로그램을 연결하여 다음과 같은 디버깅 메시지를 확인하면 정상동작을 하는 것입니다.

```
-----  
Press menu key  
-----  
0> System Information  
-----  
1> LED Test  
2> KEY Test  
3> 7-Segment Test  
-----  
x> quit
```





For more information , visit
<http://www.mangoboard.com>
<http://cafe.naver.com/embeddedcrazyboys>